



Standard Test Method for Evaluating Degree of Bleeding of Traffic Paint¹

This standard is issued under the fixed designation D 868; the number immediately following the designation indicates the year of original adoption or, in the case of revision, the year of last revision. A number in parentheses indicates the year of last reapproval. A superscript epsilon (ϵ) indicates an editorial change since the last revision or reapproval.

1. Scope

1.1 The photographic reference standards that are part of this test method² are representative of the degrees of bleeding of traffic or pavement marking paints. The standards are intended primarily for comparative evaluation in the laboratory.

1.2 Bleeding as defined is the only type of discoloration in this test method.

1.3 *This standard does not purport to address all of the safety concerns, if any, associated with its use. It is the responsibility of the user of this standard to establish appropriate safety and health practices and determine the applicability of regulatory limitations prior to use.*

2. Referenced Documents

2.1 ASTM Standards:

D 969 Test Method for Laboratory Determination of Degree of Bleeding of Traffic Paint³

2.2 ASTM Adjuncts:

D 868 Bleeding resistance of paint (one photo)²

3. Terminology

3.1 Definitions of Terms Specific to This Standard:

3.1.1 *bleeding characteristic*—that condition of discoloration manifested in traffic paint when applied to tar or asphaltic-type substrates. The number assigned to evaluate the degree of bleeding failure represents in these reference standards a measure of the contrast between the color of the dry film on a nonbleeding surface and the color of the dry film on the test surface.

4. Significance and Use

4.1 Solvents in a traffic paint may cause bleeding of

pavement constituents into the traffic marking, thereby rendering the traffic marking less effective as a lane or directional indicator. This test method in conjunction with the method for panel preparation in Test Method D 969 is used to evaluate such bleeding properties. The evaluation is very subjective and raises questions as to the usefulness of the results for specification compliance.

5. Use of Photographic Reference Standards

5.1 The photographic reference standards that are part of this test method² are representative of the degrees of bleeding of traffic or pavement marking paints. The photograph in Fig. 1 is for illustration purposes only and should not be used for evaluation.

5.2 The use of the photographic reference standards shown in Fig. 1 should be as follows:

5.3 In preparing films to compare with the reference standards for evaluating the extent of bleeding, the paint shall be applied to:

5.3.1 A nonbleeding reference surface, and

5.3.2 The test surface.

5.4 The paint under test shall be applied at a film thickness sufficient to ensure complete hiding.

5.5 The contrast in color between the films over the nonbleeding reference surface and the test surface shall be compared with the reference standards in Fig. 1 for a numerical rating.

NOTE 1—The degree of bleeding must necessarily be a function of both the bleeding surface agreed upon and the initial color of the paint. For instance, a yellow paint in general would be expected to show less bleeding than a white paint since its initial color is darker and as a consequence the discoloration effect of the bleeding surface upon this darker color will be minimized.

6. Precision and Bias

6.1 *Precision*—Due to the poor precision of this test method, if it is used in a specification, the permissible deviation from the maximum specified value should be agreed upon between the purchaser and the seller.

6.2 *Bias*—Bias cannot be determined.

7. Keywords

7.1 bleeding test; traffic paints

¹ This test method is under the jurisdiction of ASTM Committee D-1 on Paint and Related Coatings, Materials, and Applications and is the direct responsibility of Subcommittee D01.44 on Traffic Coatings.

Current edition approved Nov. 29, 1985. Published January 1986. Originally published as D 868 – 46 T. Last previous edition D 868 – 48 (1981) ϵ^1 .

² Copies of the pictorial photographic reference standards are contained in the publication *Pictorial Standards of Coating Defects*, and may be obtained from ASTM Headquarters (order Adjunct ADJD0868) or the Federation of Societies for Coating Technology, 492 Norristown Rd., Blue Bell, PA 19422. The original source of the photographic reference standards illustrated in Fig. 1 is the Federation.

³ *Annual Book of ASTM Standards*, Vol. 06.02.

TRAFFIC PAINT COLOR BLEEDING STANDARDS

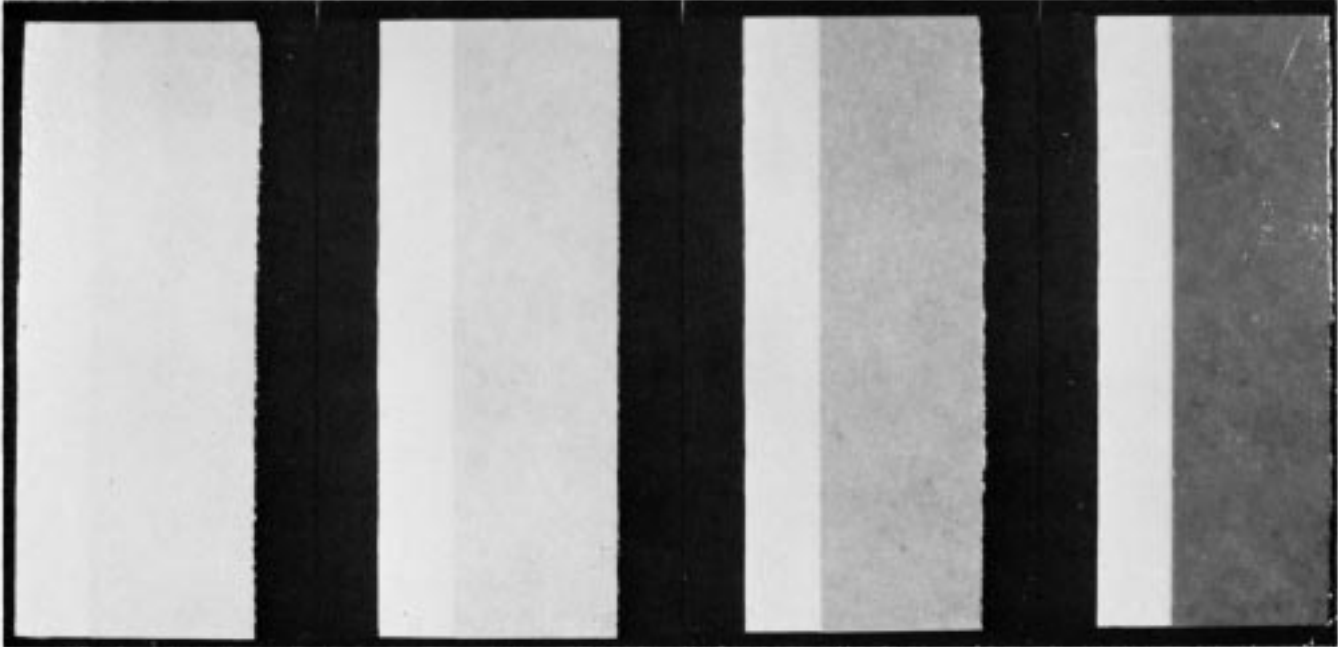


FIG. 1 Degrees of Bleeding

The American Society for Testing and Materials takes no position respecting the validity of any patent rights asserted in connection with any item mentioned in this standard. Users of this standard are expressly advised that determination of the validity of any such patent rights, and the risk of infringement of such rights, are entirely their own responsibility.

This standard is subject to revision at any time by the responsible technical committee and must be reviewed every five years and if not revised, either reapproved or withdrawn. Your comments are invited either for revision of this standard or for additional standards and should be addressed to ASTM Headquarters. Your comments will receive careful consideration at a meeting of the responsible technical committee, which you may attend. If you feel that your comments have not received a fair hearing you should make your views known to the ASTM Committee on Standards, at the address shown below.

This standard is copyrighted by ASTM, 100 Barr Harbor Drive, PO Box C700, West Conshohocken, PA 19428-2959, United States. Individual reprints (single or multiple copies) of this standard may be obtained by contacting ASTM at the above address or at 610-832-9585 (phone), 610-832-9555 (fax), or service@astm.org (e-mail); or through the ASTM website (www.astm.org).