



Standard Test Method for Visual Evaluation of Gloss Differences Between Surfaces of Similar Appearance¹

This standard is issued under the fixed designation D 4449; the number immediately following the designation indicates the year of original adoption or, in the case of revision, the year of last revision. A number in parentheses indicates the year of last reapproval. A superscript epsilon (ϵ) indicates an editorial change since the last revision or reapproval.

1. Scope

1.1 This test method covers the visual evaluation of gloss differences of coating surfaces, using special types of lamps for illumination. It identifies six aspects or types of gloss that one may look for when using the lamp to assess gloss differences between surfaces. It describes the conditions for using the lamps to best identify small differences in each of the six types of gloss. Four levels of visual gloss differences are distinguished.

1.2 While this technique is useful for both weathered and unweathered specimens, it has not been applied to metallics.

1.3 The values stated in inch-pound units are to be regarded as the standard. The values given in parentheses are for information only.

1.4 *This standard does not purport to address all of the safety concerns, if any, associated with its use. It is the responsibility of whoever uses this standard to consult and establish appropriate safety and health practices and determine the applicability of regulatory limitations prior to use.*

2. Referenced Documents

2.1 ASTM Standards:

D 3964 Practice for Selection of Coating Specimens for Appearance Measurements²

E 284 Terminology Relating to Appearance of Materials²

3. Terminology

3.1 *Definitions:* For definitions of terms used in this method, see Definitions E 284.

3.2 Descriptions of Terms Specific to This Standard:

3.2.1 *directionality of surface*—perceived change of glossy appearance of a surface with rotation of the surface in its own plane (see Fig. 1).

3.2.2 *gloss, distinctness-of-image*—perceived sharpness of images reflected by an object surface (see Fig. 2).

3.2.3 *gloss, of a surface*—perceived directionally selective

reflecting properties responsible for the degree to which reflected highlights or images of objects may be seen as superimposed on the surface.

3.2.4 *reflection haze*—cloudy or milky appearance of a surface adjacent to directions of specular reflection (see Fig. 3).

3.2.5 *sheen*—perceived shininess at a near-grazing angle of incidence for an otherwise matte specimen (difficult to photograph).

3.2.6 *specular gloss*—the relative luminous reflectance factor of a specimen in the specular direction. The luminous reflectance factor is the ratio of the luminous flux reflected from, to that incident on, a specimen for specified solid angles (see Fig. 4).

3.2.7 *texture*—perceived structure, pattern, or topography or combination thereof, of a surface (see Fig. 5).

4. Summary of Test Method

4.1 Test specimens are illuminated by special light sources that provide reflected images suitable for rating the gloss of coating surfaces. Two types of lamps may be used to produce reflected images. Lamp A consists of a modified fluorescent desk lamp covered with screen mesh. Lamp B consists of an incandescent bare filament bulb installed in an adjustable angle fixture.

4.2 Light from the selected lamp illuminates the test specimens. The reflected images reveal specular gloss reflection; the sharpness of the images of the screen or lamp filament reveals the detail and quality of the surface reflection (distinctness of image); and spreading of the reflected light into dark areas, such as the space between fluorescent tubes or near the filament image, reveals the presence of near-specular haze.

5. Significance and Use

5.1 Gloss³ is associated with the capacity of a surface to reflect more light in some directions than in others. The directions associated with mirror (or specular) reflection normally have the highest reflectances. Gloss is best seen and analyzed when the surfaces studied are illuminated by a light source that provides strong contrasting patterns of light and dark. Such a light source is described in this test method.

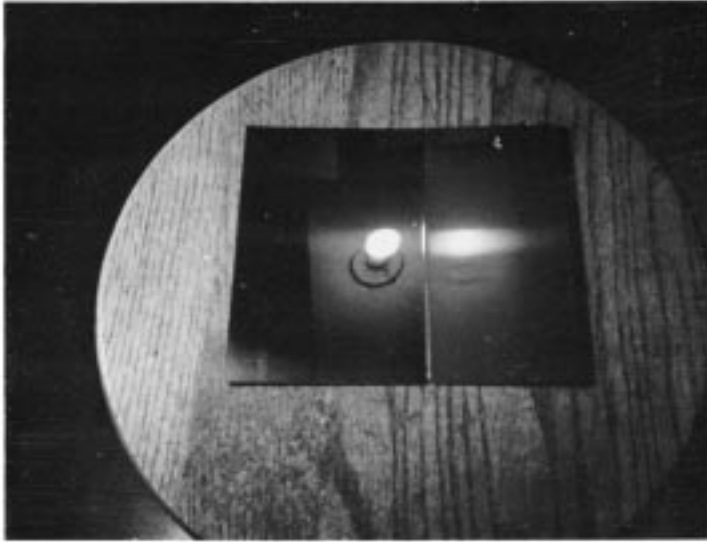
5.2 The simplest concept of gloss is that it corresponds to

¹ This test method is under the jurisdiction of ASTM Committee D-1 on Paint and Related Coatings, Materials, and Applications and is the direct responsibility of Subcommittee D01.26 on Optical Properties.

Current edition approved Oct. 26, 1990. Published December 1990. Originally published as D 4449 – 85. Last previous edition D 4449 – 85¹.

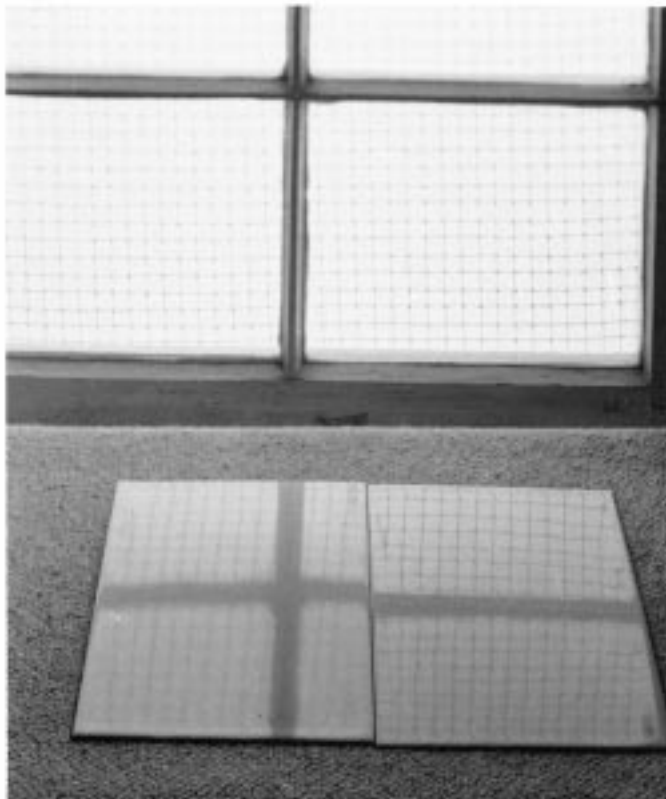
² *Annual Book of ASTM Standards*, Vol 06.01.

³ For a more detailed account of gloss, its measurement, and relationship to appearance generally, see R. S. Hunter, *The Measurement of Appearance*, Wiley Interscience New York, NY 1975.



NOTE 1—The left panel is free of directionality. The right panel is highly directional because of buffing marks.

FIG. 1 Reflection of Bright Incandescent Lamp in Two Panels



NOTE 1—The panels exhibit a difference in distinctness-of-reflected image.

FIG. 2 Two White Porcelain Enamel Panels

the mirror-like reflectances of surfaces. However, the distributions and intensities of this surface-reflected light are (for real materials) highly variable and affected by a variety of factors: surface smoothness and contour, refractive index, absorptance, angle of incidence, and (to a generally small extent) wave-

length. From the great variety of surface-reflection patterns met in materials of commerce, it has been possible to identify seven surface-reflection criteria or “types of gloss” regularly used by skilled technologists for intercomparing and rating their products for gloss. Six of the seven criteria, or “types of gloss,” are

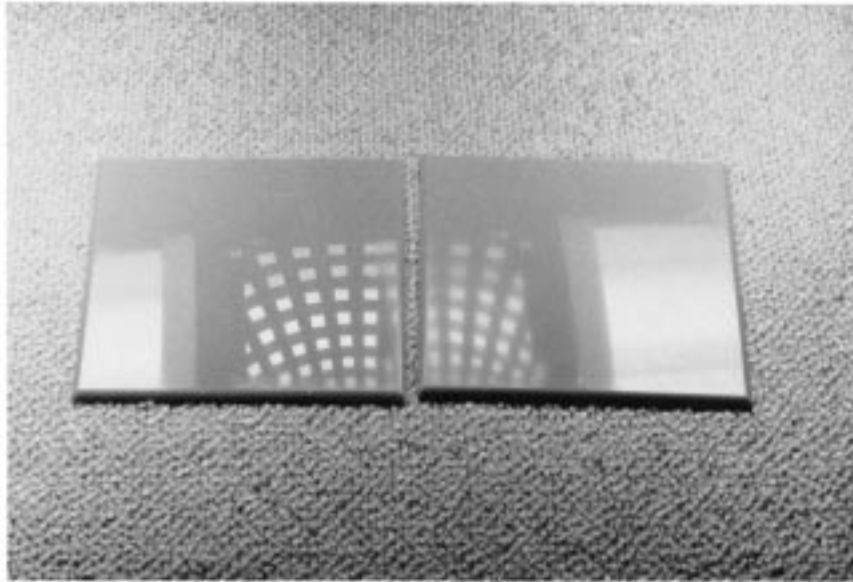
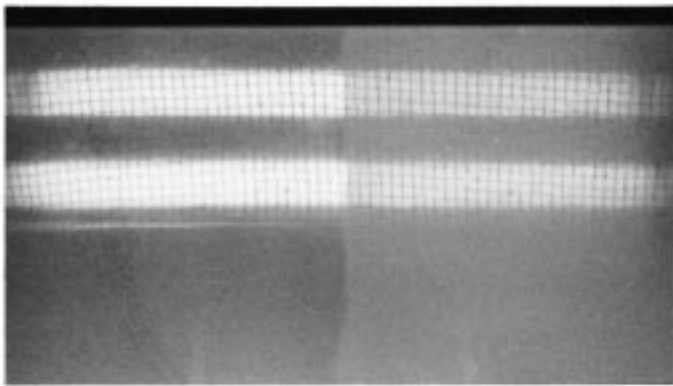


FIG. 3 Two Blue Plastic Wall Tiles Exhibiting a Difference in Reflection Haze



NOTE 1—The panel is polished on left end to produce higher specular gloss than the right end.

FIG. 4 Panel Coated with an Automobile Finish

identified in the section on definitions. The seventh, luster or contrast gloss, is seldom of concern to the coatings industry.

6. Apparatus

6.1 *Lamp A*—The recommended apparatus is constructed by modifying a conventional fluorescent desk lamp that has two 15-W, 18-in. (450-mm) tubes. Fig. 6 is a photograph; Fig. 7 is a drawing of this lamp. The conventional lamp is modified by painting matte black the normally white reflector behind the lamp tubes. Then, after replacing the tubes, a piece of 1/4-in. (6.3-mm) mesh hardware cloth is fastened to the front of the reflector.

6.2 *Lamp B*—The recommended apparatus is an incandescent bare filament bulb mounted on an adjustable angle fixture.⁴

7. Preparation of Specimens

7.1 Since gloss is ascribable largely to the top layer of the surface of any given object, dirt and other surface contamination significantly affect gloss. Therefore, the conditions and care of the surface, while preparing and examining it for gloss, are critically important.

7.2 Methods for preparing paint surfaces for examination are described in Practice D 3964.

7.3 *Specimen Sizes*—Preferred sizes of specimens for the indicated use are from 2³/₄ to 12 in. (70 to 300 mm) wide and 5¹/₂ to 16 in. (140 to 400 mm) long.

8. Procedure

8.1 *Placement of Lamp and Specimens for Study*—From Fig. 8, select the relative positions of lamp, specimen surfaces, and observer appropriate to the gloss differences in the specimens under study. Level of ambient illumination *must* be such that a photometer, placed in the specimen plane, decreases in reading with the gloss lamp turned off to less than 1/10 the value with the gloss lamp on.

8.2 *Visual Examination of Gloss of Surfaces*—Place the specimen surfaces side by side. Examine the light from the gloss lamp reflected to the observer by looking for the appropriate gloss attributes described in 3.2.

⁴ Suitable bare filament bulbs and mounting fixtures such as a night light bulb mounted in a “goose-necked” desk lamp equipped with a screw-in receptacle or mounted in a hanging lamp socket equipped with screw-in receptacle, or an auto bulb, installed in an adjustable microscope lamp fixture, or a 120V 25-W tubular bulb, installed in a “goose-necked” desk lamp or installed in a hanging lamp socket have been found suitable for this purpose.

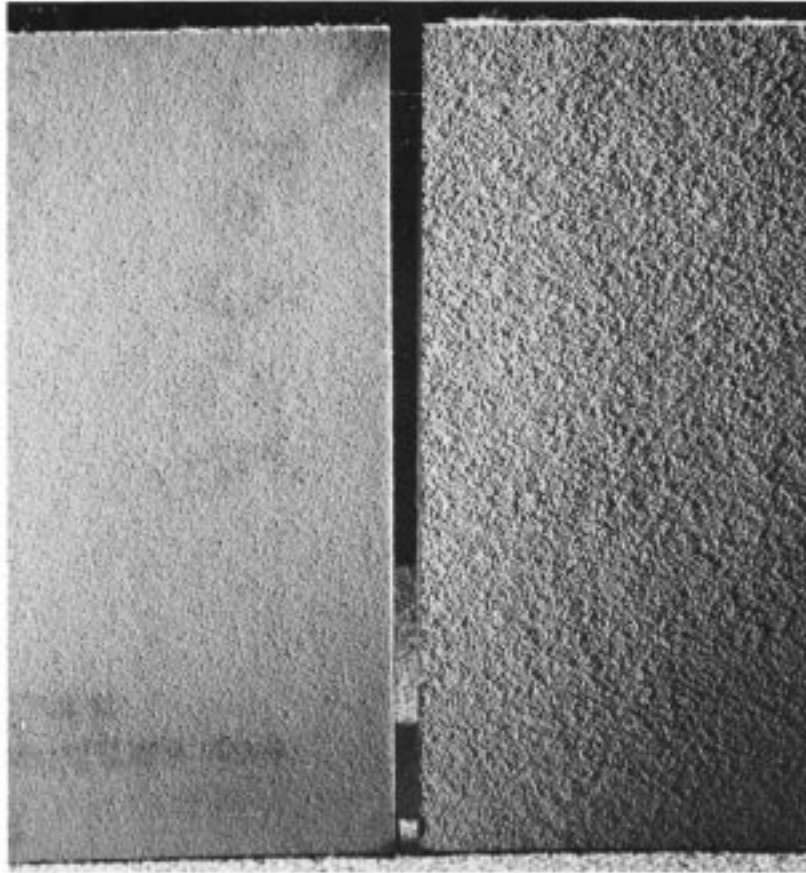


FIG. 5 Two Painted Panels Differing in Texture

8.3 Interchange positions of surfaces being compared a number of times to ensure that comparisons are free of bias as the result of specific position relationships. Record:

8.3.1 Each attribute or type of gloss for which judgment is made.

8.3.2 Nature and magnitude to the nearest whole number of gloss difference (see section 9.3). Add specimen identification to the record before proceeding to the next intercomparison. Record the mean of two readings.

9. Report

9.1 Report the following information:

9.1.1 Specimens and their method of preparation, including any pretreatment of test surfaces by cleaning, polishing, wetting, drying, or other action.

9.1.2 Lamp-specimen relationship used from those shown in Fig. 8.

9.1.3 Type and magnitude of gloss differences observed. Identify differences between each pair of surfaces compared as either:

- None (or indistinguishable) = 0
- Very slight (barely distinguishable) = 1
- Moderate (easily seen) = 2
- Considerable = 3

9.1.4 Which of the pair appears glossier (except in first case).

10. Precision

NOTE 1—The precision study has not been completed.

10.1 *Repeatability*—Two results obtained by the same operator should be considered suspect if they differ by more than two in ratings.

10.2 *Reproducibility*—Two results, each the mean of two runs, obtained by operators in different laboratories should be considered suspect if they differ by more than 2.2 in ratings.

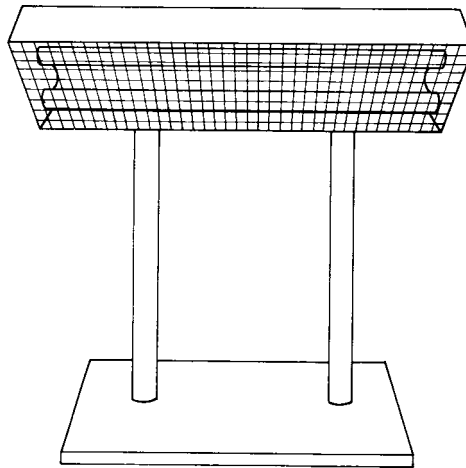
11. Keywords

11.1 distinctness of image; gloss; haze; visual gloss



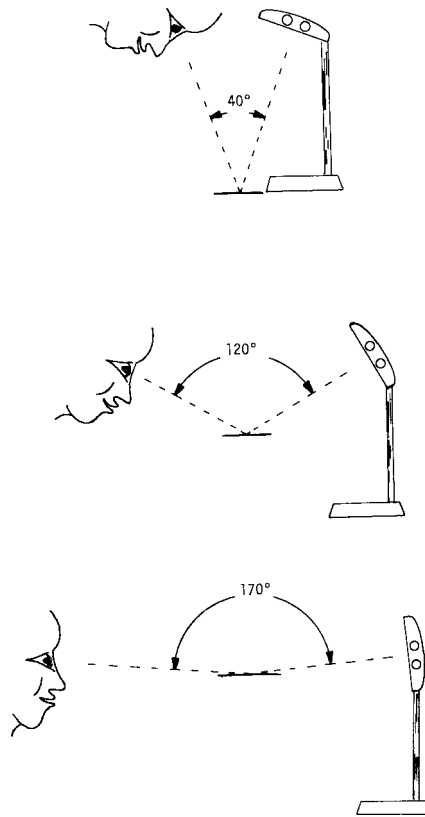
NOTE 1—The lamp is used to demonstrate gloss or geometric differences in the appearances of surfaces.

FIG. 6 Modified Desk Lamp



NOTE 1—The lamp is modified by the addition of a black reflecting surface behind tubes and a wire screen in front.

FIG. 7 Desk Lamp



- (a) For high specular gloss, distinctness-of-image gloss, and reflection haze
- (b) For intermediate and low specular gloss and directionality of plane surfaces
- (c) For sheen

FIG. 8 Recommended Positions of Gloss Inspection Lamp, Observer, and Surfaces of Different Levels of Gloss Being Intercompared

The American Society for Testing and Materials takes no position respecting the validity of any patent rights asserted in connection with any item mentioned in this standard. Users of this standard are expressly advised that determination of the validity of any such patent rights, and the risk of infringement of such rights, are entirely their own responsibility.

This standard is subject to revision at any time by the responsible technical committee and must be reviewed every five years and if not revised, either reapproved or withdrawn. Your comments are invited either for revision of this standard or for additional standards and should be addressed to ASTM Headquarters. Your comments will receive careful consideration at a meeting of the responsible technical committee, which you may attend. If you feel that your comments have not received a fair hearing you should make your views known to the ASTM Committee on Standards, 100 Barr Harbor Drive, West Conshohocken, PA 19428.