



# Standard Test Method for Determining the Resistance of Lubricating Grease to Water Spray<sup>1</sup>

This standard is issued under the fixed designation D 4049; the number immediately following the designation indicates the year of original adoption or, in the case of revision, the year of last revision. A number in parentheses indicates the year of last reapproval. A superscript epsilon ( $\epsilon$ ) indicates an editorial change since the last revision or reapproval.

## 1. Scope

1.1 This test method<sup>2</sup> covers the ability of a grease to adhere to a metal surface when subjected to a water spray under prescribed laboratory conditions.

1.2 The values stated in SI units are to be regarded as the standard. The values given in parentheses are for information only.

1.3 *This standard does not purport to address all of the safety concerns, if any, associated with its use. It is the responsibility of the user of this standard to establish appropriate safety and health practices and determine the applicability of regulatory limitations prior to use.*

## 2. Referenced Documents

### 2.1 ASTM Standards:

D 235 Specification for Mineral Spirits (Petroleum Spirits) (Hydrocarbon Dry Cleaning Solvent)<sup>3</sup>

E 691 Practice for Conducting an Interlaboratory Study to Determine the Precision of a Test Method<sup>4</sup>

## 3. Terminology

### 3.1 Definitions:

3.1.1 *lubricating grease, n*—a semi-fluid to solid product of a thickener in a liquid lubricant.

3.1.1.1 *Discussion*—The dispersion of the thickener forms a two-phase system and immobilizes the liquid by surface tension and other physical forces. Other ingredients are commonly included to impart special properties. **D 217**

3.1.2 *oil separation, n*—the appearance of a liquid fraction from an otherwise homogeneous lubricating composition. **D 1742**

3.1.3 *thickener, n*—in *lubricating grease*, a substance composed of finely-divided particles dispersed in a liquid lubricant to form the product's structure.

3.1.3.1 *Discussion*—The thickeners can be fibers (such as various metallic soaps) or plates or spheres (such as certain non-soap thickeners), which are insoluble or, at most, only very slightly soluble in the liquid lubricant. The general requirements are that the solid particles be extremely small, uniformly dispersed, and capable of forming a relatively stable, gel-like structure with the liquid lubricant. **D 217**

## 4. Summary of Test Method

4.1 The grease to be tested is coated on a stainless steel panel and sprayed with water at the specified test temperature and pressure. The amount of grease remaining on the panel after 5 min  $\pm$  15 s is a measure of the resistance of the grease to water spray.

## 5. Significance and Use

5.1 This test method is used to evaluate the ability of a grease to adhere to a metal surface when subjected to direct water spray. The results obtained from the use of this test method suggest correlation in operations involving direct water spray impingement such as steel mill roll neck bearing service.<sup>5</sup> This test method is used for quality control and purchase specifications.

## 6. Apparatus<sup>6</sup>

6.1 *Stainless Steel Test Panel*, 18-8 (chromium-nickel) stainless steel, as shown in Fig. 1.

6.1.1 *Grease Application Jig*, for applying grease to panel; Fig. 2.

6.2 *Water Spray Apparatus*, as shown on Fig. 3.

6.3 *Spray Nozzle*, as described in Fig. 4.

6.4 *Thermometer or Thermocouple*, capable of measuring 38  $\pm$  0.5°C, to determine the temperature of the water spray, positioned to prevent breaking the spray pattern.

## 7. Reagents and Materials

7.1 *Purity of Reagents*—Reagent grade chemicals shall be used in all tests. Unless otherwise indicated, it is intended that

<sup>1</sup> This test method is under the jurisdiction of ASTM Committee D-2 on Petroleum Products and Lubricants and is the direct responsibility of Subcommittee D02.G on Lubricating Grease.

Current edition approved Nov. 10, 1999. Published January 2000. Originally published as D 4049 – 81. Last previous edition D 4049 – 93.

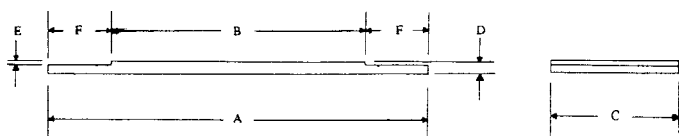
<sup>2</sup> The development of this test method is described in Musilli, T. G., "Water Spray-Off Characteristics of Lubricating Grease," *NLGI Spokesman*, December 1982, pp. 323–326.

<sup>3</sup> *Annual Book of ASTM Standards*, Vol 06.04.

<sup>4</sup> *Annual Book of ASTM Standards*, Vol 14.02.

<sup>5</sup> NLGI Spokesman, August 1973, Evaluation of Greases for Steel Mill Service, A. E. Cichelli, Author NLGI Spokesman, April 1980, Grease Lubrication in Steel Mills with Emphasis on Roll Neck Bearings, A. E. Cichelli, Author.

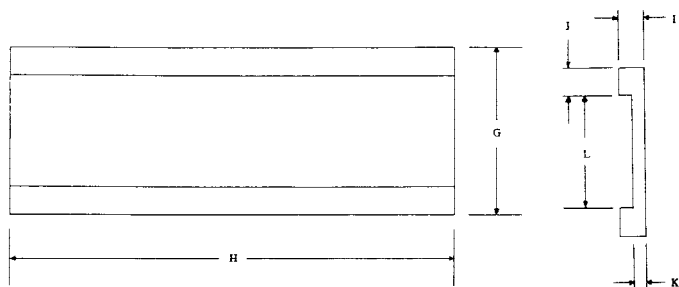
<sup>6</sup> Available from Koehler Instrument Co., Inc., 1595 Sycamore Ave., Bohemia, NY 11716.



	DIMENSIONS	
	in.	mm
A- Overall panel length	6.0	152.4
B- Raised section length	4.0	101.6
C- Width	2.000 - 0.002	50.8 - .05
D- Thickness	$0\frac{3}{16} \pm 0.003$	$4.76 \pm 0.08$
E- Reduced section thickness	$\frac{1}{16}$	1.59
F- Reduced section length	1.0	25.4

NOTE 1—All tolerances  $\pm 0.03$  mm unless otherwise specified.

FIG. 1 Stainless Steel Test Panel



	DIMENSIONS	
	in.	mm
G- Width	3.0	76.2
H- Length	8.0	203.2
I- Thickness	$\frac{7}{16}$	11.11
J- Raised section width	$\frac{1}{2}$	12.7
K- Reduced section thickness	$\frac{7}{32}$	5.54
L- Reduced section width	$2.001 + 0.003$	$50.83 + 0.5$

NOTE 1—All tolerances  $\pm 0.03$  mm unless otherwise specified.

FIG. 2 Grease Application Jig

all reagents shall conform to the specifications of the committee on Analytical Reagents of the American Chemical Society, where such specifications are available.<sup>7</sup> Other grades may be used, provided it is first ascertained that the reagent is of sufficiently high purity to permit its use without lessening the accuracy of the determination.

7.2 *Stoddard Solvent*, meeting requirements of Specification D 235. (**Warning**—Combustible. Vapor harmful.)

7.3 *n-Heptane*, reagent grade, minimum purity. (**Warning**—Flammable. Harmful if inhaled.)

## 8. Sampling

8.1 Each test will require a quantity sufficient to cover the steel panel (approximately 4-12 g).

8.2 Supply a 25 g (minimum) representative sample.

<sup>7</sup> *Reagent Chemicals, American Chemical Society Specifications*, American Chemical Society, Washington, DC. For suggestions on the testing of reagents not listed by the American Chemical Society, see *Analar Standards for Laboratory Chemicals*, BDH Ltd., Poole, Dorset, U.K., and the *United States Pharmacopeia and National Formulary*, U.S. Pharmacopeial Convention, Inc. (USPC), Rockville, MD.

8.3 Examine for any indication of nonhomogeneity, such as oil separation, phase changes, or gross contamination. If any abnormal conditions are found, obtain a new sample.

## 9. Preparation of Apparatus

9.1 Clean the test panel by brushing with Stoddard solvent. Then rinse with *n*-heptane and air dry (**Warning**—See 7.2 and 7.3)

9.2 Clean reservoir by flushing with water and wipe off any residual oil film from the surfaces of the reservoir and from the spray chamber area. Dissassemble and clean the spray nozzle, taking care to properly position the vane in the cone body during assembly.

9.2.1 Clean apparatus as in 9.2 after each test.

## 10. Procedure

10.1 Weigh a clean test panel to the nearest 0.1 g, and record as  $W_1$ , and then, using the metal jig (as described in Fig. 2), use a spatula to spread approximately a  $0.8 \pm 0.005$ -mm ( $\frac{1}{32}$ -in.) thick film of grease. Clean off any grease beyond the raised section of the panel. Reweigh and record as  $W_2$ .

10.2 Add an adequate amount of tap water to the reservoir and to cover the heater and adjust the water temperature to  $38 \pm 0.5^\circ\text{C}$  ( $100 \pm 1^\circ\text{F}$ ). When the water temperature in the reservoir reaches  $38 \pm 0.5^\circ\text{C}$  ( $100 \pm 1^\circ\text{F}$ ), circulate 2 to 3 min to attain temperature equilibrium before spraying the panel. Adjust pump pressure to  $276 \pm 7$  kPa ( $40 \pm 1$  psi) using bypass valve. The bypass valve must be ahead of the gage, not between the gage and nozzle. Shut off the motor.

10.3 Insert the panel, making sure the panel is level and centered below the spray nozzle. Start the motor and spray the water on the panel for  $5 \text{ min} \pm 15 \text{ s}$ .

10.4 Shut off the motor to stop the spray, and remove the panel. Remove the excess grease outside the raised section of panel (area BC, Fig. 1) and along the sides and bottom of the panel. Place the panel in a horizontal position in an oven for  $1 \text{ h} \pm 5 \text{ min}$  at  $66 \pm 1^\circ\text{C}$  ( $150 \pm 2^\circ\text{F}$ ).

10.5 Remove the panel from the oven, and allow to cool. Reweigh the panel, and record as  $W_3$ .

## 11. Calculation

11.1 Calculate the percent spray-off as follows:

$$\% \text{ spray-off} = [(W_2 - W_3)/(W_2 - W_1)](100) \quad (1)$$

where:

$W_1$  = initial mass of clean panel,

$W_2$  = panel plus grease, before spraying, and

$W_3$  = panel plus grease, after spraying

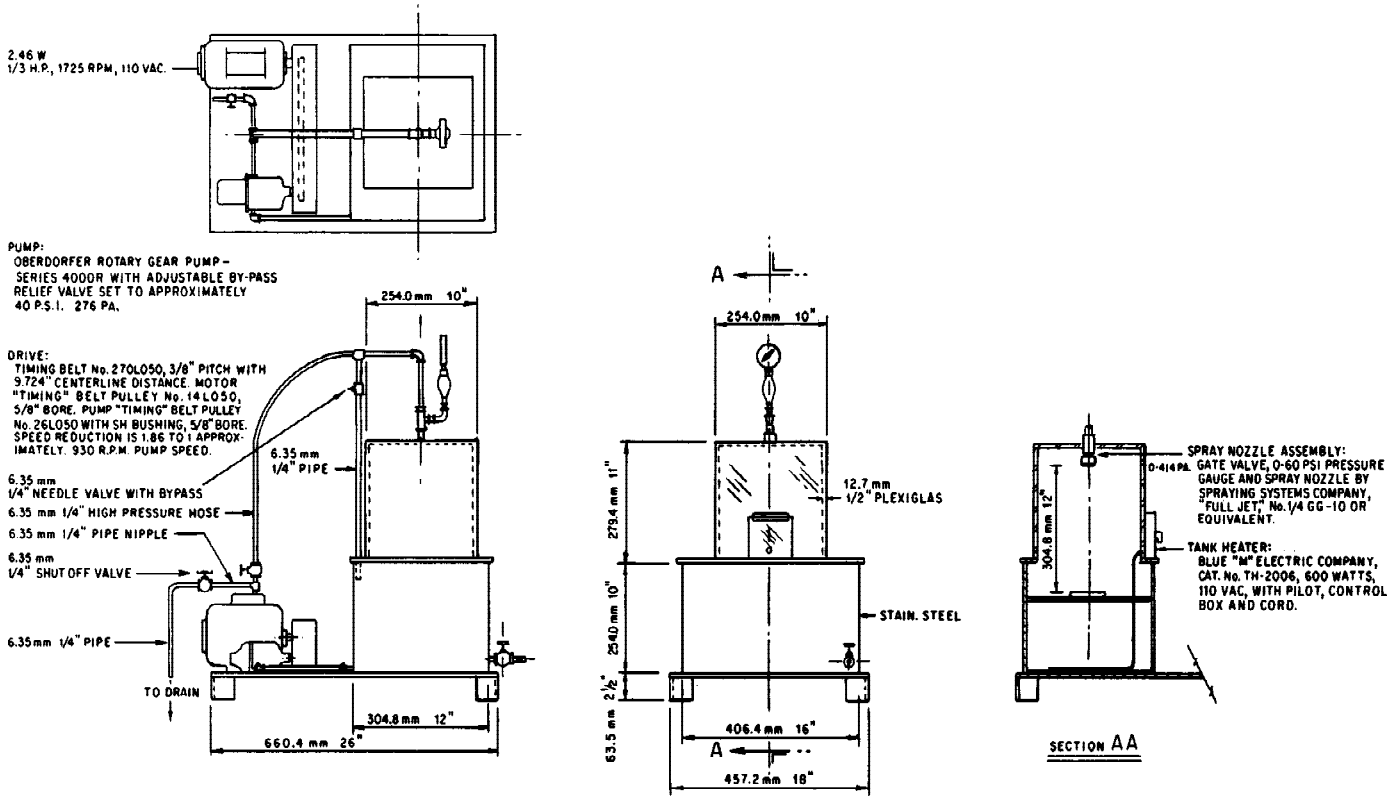
## 12. Report

12.1 Report the following: date, grease identity, and percent spray-off to the nearest 1.0 %.

## 13. Precision and Bias <sup>8</sup>

13.1 The precision of this test method as determined by statistical examination of interlaboratory results in accordance with Practice E 691 is as follows:

<sup>8</sup> Supporting data are available from ASTM Headquarters. Request RR: D02-1188.



NOTE 1—The bypass valve shall be ahead of the gage, not between the gage and nozzle.

FIG. 3 Water Spray Apparatus

13.1.1 *Repeatability*—The difference between two test results obtained by the same operator with the same apparatus under constant operating conditions on identical test material would, in the long run, in the normal and correct operation of the test method, exceed the following value in only one case in twenty:

6.0 % spray off

13.1.2 *Reproducibility*—The difference between two single and independent results obtained by different operators working in different laboratories on identical test material would, in

the long run, in the normal and correct operation of the test method, exceed the following value in only one case in twenty:

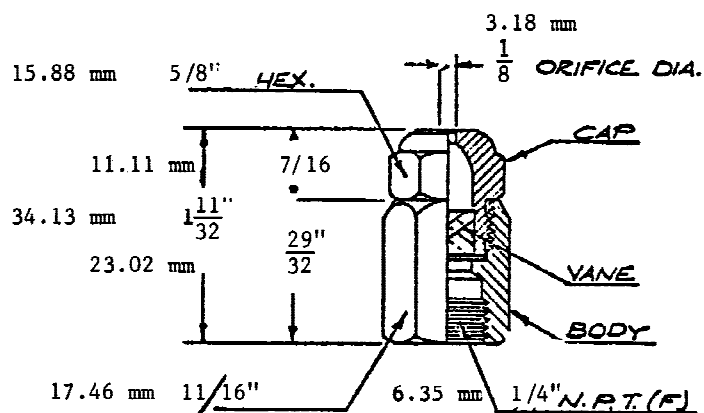
18.0 % spray off

13.2 *Bias*—The procedure for measuring a grease's resistance to water spray has no bias because the value of spray-off can be defined only in terms of a test method.

## 14. Keywords

14.1 grease; spray; water resistance; waterspray

FULL CONE  
SPRAY PATTERN



TYPE OF LIQUID	CAPACITY G.P.M. AND SPRAY ANGLE AT PRESSURE psi					
	40	60	80	100	150	250
Water	1.9 65°	2.4 63°	2.7 61°	3.0 60°	3.6 58°	5.0 55°

kPa	psi
276	40
414	60
552	80
689	100
1034	150
1724	250

FIG. 4 Full Cone Spray Tester

**SUMMARY OF CHANGES**

Subcommittee D02.G has identified the location of selected changes to the standard since the last issue (D 4049-93) that may impact the use of this standard.

- |   |   |
|---|---|
| (1) Added Terminology section.                                | determine the precision statement.      |
| (2) Updated Reagents and Materials section.                   | (5) Updated Figs. 1 and 2.              |
| (3) Added Sampling section.                                   | (6) Added tolerances where appropriate. |
| (4) Updated precision statement to clarify the method used to |   |

*ASTM International takes no position respecting the validity of any patent rights asserted in connection with any item mentioned in this standard. Users of this standard are expressly advised that determination of the validity of any such patent rights, and the risk of infringement of such rights, are entirely their own responsibility.*

*This standard is subject to revision at any time by the responsible technical committee and must be reviewed every five years and if not revised, either reapproved or withdrawn. Your comments are invited either for revision of this standard or for additional standards and should be addressed to ASTM International Headquarters. Your comments will receive careful consideration at a meeting of the responsible technical committee, which you may attend. If you feel that your comments have not received a fair hearing you should make your views known to the ASTM Committee on Standards, at the address shown below.*

 **D 4049 – 99**

*This standard is copyrighted by ASTM International, 100 Barr Harbor Drive, PO Box C700, West Conshohocken, PA 19428-2959, United States. Individual reprints (single or multiple copies) of this standard may be obtained by contacting ASTM at the above address or at 610-832-9585 (phone), 610-832-9555 (fax), or [service@astm.org](mailto:service@astm.org) (e-mail); or through the ASTM website ([www.astm.org](http://www.astm.org)).*