



Standard Test Method for Purity of Methyl Amyl Ketone and Methyl Isoamyl Ketone by Gas Chromatography¹

This standard is issued under the fixed designation D 3893; the number immediately following the designation indicates the year of original adoption or, in the case of revision, the year of last revision. A number in parentheses indicates the year of last reapproval. A superscript epsilon (ϵ) indicates an editorial change since the last revision or reapproval.

1. Scope *

1.1 This test method covers the determination of the purity of methyl amyl ketone and methyl isoamyl ketone. In addition, the method determines total ketones and various impurities which may include acetone, isopropyl alcohol, methyl propyl ketone, methyl isobutyl ketone, methyl butyl ketone, methyl isobutyl carbinol, mesityl oxide, methyl isoamyl ketone, methyl butyl carbinol, methyl amyl ketone, and diisobutyl ketone.

1.2 Water and acid cannot be determined by this test method and must be measured by other appropriate ASTM procedures and the results used to normalize the chromatographic data.

1.3 *This standard does not purport to address all of the safety concerns, if any, associated with its use. It is the responsibility of the user of this standard to establish appropriate safety and health practices and determine the applicability of regulatory limitations prior to use.*

1.4 For hazard information and guidance, see the supplier's Material Safety Data Sheet.

2. Referenced Documents

2.1 ASTM Standards:

D 1364 Test Method for Water in Volatile Solvents (Karl Fischer Reagent Titration Method)²

D 1613 Test Method for Acidity in Volatile Solvents and Chemical Intermediates Used in Paint, Varnish, Lacquer, and Related Products²

E 180 Practice for Determining the Precision of ASTM Methods for Analysis and Testing of Industrial Chemicals³

3. Summary of Method

3.1 A representative specimen is introduced onto a gas-liquid partition column. The separated components are measured in the effluent by a detector and recorded as a chromatogram. The chromatogram is interpreted by applying component attenuation and detector response factors to the peak areas and relative concentrations are determined by relating the individual peak responses to the total peak response. Water and

acidity are measured by Test Methods D 1364 and D 1613, respectively, and the results are used to normalize the values obtained by gas chromatography.

4. Significance and Use

4.1 This procedure is designed to determine the purity of the two ketones, methyl isoamyl ketone and methyl amyl ketone, and to obtain the concentration of their various impurities, several of which are critical in the application of these solvents.

5. Apparatus

5.1 *Chromatograph*—Any gas-liquid chromatographic instrument having either a thermal conductivity or flame ionization detector and sufficient sensitivity and stability to obtain for 0.01 % impurity in the specimen a recorder deflection of at least 20 mm at a signal-to-noise ratio of at least 5 to 1. A recording integrator or computer data processing system may also be used.

5.1.1 The injection port of the chromatograph must have a volume of at least 1.2 mL to provide for proper vaporization of the specimen. The use of a smaller injection port or on-column injection causes peak broadening and tailing.

5.2 *Column*—Four and one half m of 3.2-mm stainless steel tubing packed with 80 to 90-mesh acid-washed, base-washed, and silanized diatomaceous earth support coated with 10.0 % 20 000 molecular weight polyethylene glycol and a 8.33 % phenyl methyl (50:50) silicone. A capillary column, capable of the required separation may also be used.

5.3 *Specimen Introduction System*—Any system capable of introducing a representative specimen onto the column. Micro-liter syringes have been used successfully.

5.4 *Recorder*—A recording potentiometer with a full-scale deflection of 1 mV, full-scale response time of 1 s or less, and sufficient sensitivity and stability to meet the requirements of 5.1.

6. Reagents and Materials

6.1 *Carrier Gas*, appropriate to the type of detector used. Helium or hydrogen may be employed with thermal conductivity detectors and nitrogen, helium, or argon with flame ionization detectors. The minimum purity of the carrier gas used should be 99.95 mol %. An oxygen removal system is recommended for the carrier gas.

6.1.1 **Warning**—If hydrogen is used, take special safety

¹ This test method is under the jurisdiction of ASTM Committee D-1 on Paint and Related Coatings, Materials, and Applications and is the direct responsibility of Subcommittee D01.35 on Solvents, Plasticizers, and Chemical Intermediates.

Current edition approved Dec. 10, 1999. Published February 2000. Originally published as D 3893 – 80. Last previous edition D 3893 – 95.

² *Annual Book of ASTM Standards*, Vol 06.04.

³ *Annual Book of ASTM Standards*, Vol 15.05.

*A Summary of Changes section appears at the end of this standard.

precautions to ensure that the system is free of leaks and that the effluent is vented properly.

6.2 Column Materials:

6.2.1 *Liquid Phase*—20 000 molecular weight polyethylene glycol and phenyl methyl (50:50) silicone.

6.2.2 *Solid Support*—Acid-washed, base-washed, and silanized diatomaceous earth, 80 to 90 mesh.

6.2.3 *Solvents*—Methylene chloride, reagent grade.

6.2.4 *Tubing Material*—The stainless steel tubing must be of uniform internal diameter and must be clean. Wash the inside of the tubing with methylene chloride, then water, and finally methyl alcohol and blow dry with nitrogen.

6.3 *Standards for Calibration and Identification*—Standard samples of all components are needed for establishing identification by retention time and for calibration for quantitative measurements. In most cases, the pure compounds required for calibration cannot be purchased and must be purified by distillation before use.

7. Preparation of Column

7.1 Place 50 g of the solid support, 80 to 90 mesh, in a large evaporating dish. Dissolve 12.5 g of the polyethylene glycol in about 40 mL of methylene chloride and add to the solid support. Add additional methylene chloride to wet and cover the solid support. Evaporate the methylene chloride in a fume hood with gentle stirring and under a gentle stream of nitrogen.

7.2 Place 50 g of the solid support in a large evaporating dish. Dissolve 10 g of the phenyl methyl silicone in about 40 mL of methylene chloride and add to the solid support. Add additional methylene chloride to wet and cover the solid support. Evaporate the methylene chloride in a fume hood with gentle stirring and under a gentle stream of nitrogen.

7.3 Add 12 g of the packing prepared in 7.1 and 12 g of the packing prepared in 7.2 to a small glass bottle or beaker and mix well. The mixture is used as the column packing material.

7.4 *Column Preparation*—The method used to pack the column is not critical provided that the finished column produces the required separation of all of the components to be determined.

8. Calibration and Standardization

8.1 *Chromatograph*—Install the column in the chromatograph and adjust the operating parameters as directed in Table 1. Allow sufficient time for the instrument to reach equilibrium as indicated by a stable recorder baseline.

8.2 Determine the retention time of each component by injecting small amounts either separately or in known mixtures. The components should elute close to the typical retention times given in Table 1 and the chromatograms should closely approximate those shown in Fig. 1 and Fig. 2.

8.3 The area under each peak of the chromatogram is considered a quantitative measure of the corresponding compound. The relative area is proportional to concentration if the detector responds equally to all the sample components. The response to different components is generally significantly different for both flame ionization and thermal conductivity detectors. This difference in detector response may be corrected by use of relative response factors obtained by injecting and measuring the response of pure components or known

TABLE 1 Instrument Conditions and Retention Times

Temperature, ° C:		
Column, isothermal	100	
Injection port	170	
Detector block	210	
Carrier gas	Helium	
Flow rate, mL/min	25	
	Methyl Amyl Ketone	Methyl Isoamyl Ketone
Relative retention times, major component = 1.00		
Air	0.04	0.05
Acetone	0.14	0.18
Isopropyl alcohol	0.18	0.23
Methyl propyl ketone	0.31	0.38
Methyl isobutyl ketone	0.35	0.45
Methyl butyl ketone	0.51	0.64
Methyl isobutyl carbinol	0.61	0.77
Mesityl oxide	0.65	0.83
Methyl isoamyl ketone	0.73	1.00
Methyl butyl carbinol	0.82	1.02
Methyl amyl ketone	1.00	1.16
Diisobutyl ketone	1.04	1.25

blends. For accurate determination of the impurities, prepare and analyze a known blend containing the impurities in concentrations that approximate the maximum specification limit. Calculate the response factors relative to unity for the major ketone.

9. Procedure

9.1 Introduce a representative specimen into the chromatograph using sufficient material to ensure a minimum 10 % recorder deflection for a 0.1 % concentration of impurity at the most sensitive setting of the instrument.

NOTE 1—The best separation of the impurities has been obtained with specimen sizes of 1 or 2 μ L.

9.2 Using the same conditions as for component identification and standardization, record the peaks of all components at attenuation settings that provide optimum peak heights.

10. Calculation

10.1 Measure the area of all peaks (Note 2) and multiply each area by the appropriate attenuation factor to express the peak areas on a common basis. Apply the appropriate detector response to each component to obtain the corrected peak response. Calculate the weight percent composition by dividing the individual corrected component areas by the total corrected area. Make corrections to account for water and acidity present as determined by the ASTM methods given in 2.1.

NOTE 2—Peak areas may be determined by any method that meets the precision limits given in Section 12. For best results determine peak areas by electronic integration.

10.2 Calculate the weight percent of each component as follows:

$$\text{Weight \%} = \frac{A}{B} \times (100 - C) \quad (1)$$

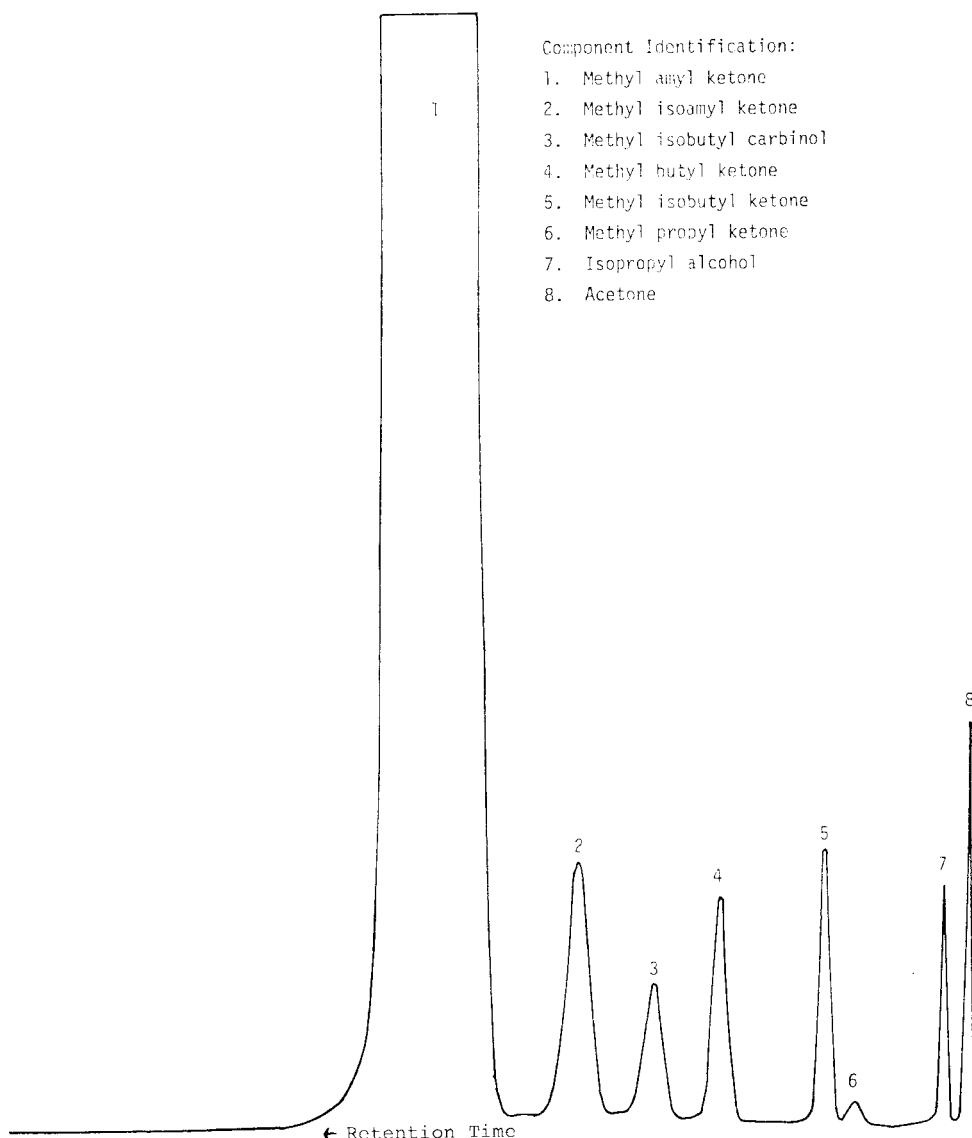


FIG. 1 Typical Chromatogram of Methyl Amyl Ketone

where:

A = corrected peak response,

B = sum of corrected peak responses, and

C = sum of water and acidity in weight percent.

10.3 Calculate the total ketones concentration by summing the weight percent of all ketones detected.

11. Report

11.1 Report the total ketone content, purity, and quantity of the various impurities to the nearest 0.01 %. Duplicate runs for the total ketone and purity values that agree within 0.15 % absolute are acceptable for averaging (95 % confidence level). Duplicate runs for the impurities that agree within 0.03 % absolute are acceptable for averaging.

12. Precision and Bias ⁴

12.1 *Precision*—The precision statements are based upon an

interlaboratory study in which one operator in five laboratories analyzed in duplicate on two different days one sample of each of the following ketones of the average composition shown in Table 2. The results were analyzed in accordance with Practice E 180. The within-laboratory and between-laboratories standard deviations were found to be as shown in Table 3. Based upon these standard deviations, the following criteria should be used for judging the acceptability of results at the 95 % confidence level.

12.1.1 *Repeatability*—Two results, each the mean of duplicates, obtained by the same operator on different days should be considered suspect if they differ by more than as shown in Table 4.

12.1.2 *Reproducibility*—Two results, each the mean of duplicates, obtained by operators in different laboratories should be considered suspect if they differ by more than as shown in Table 4.

12.2 *Bias*—Bias cannot be determined for this test method

⁴ Supporting data are available from ASTM Headquarters. Request RR:D01 - 1043.

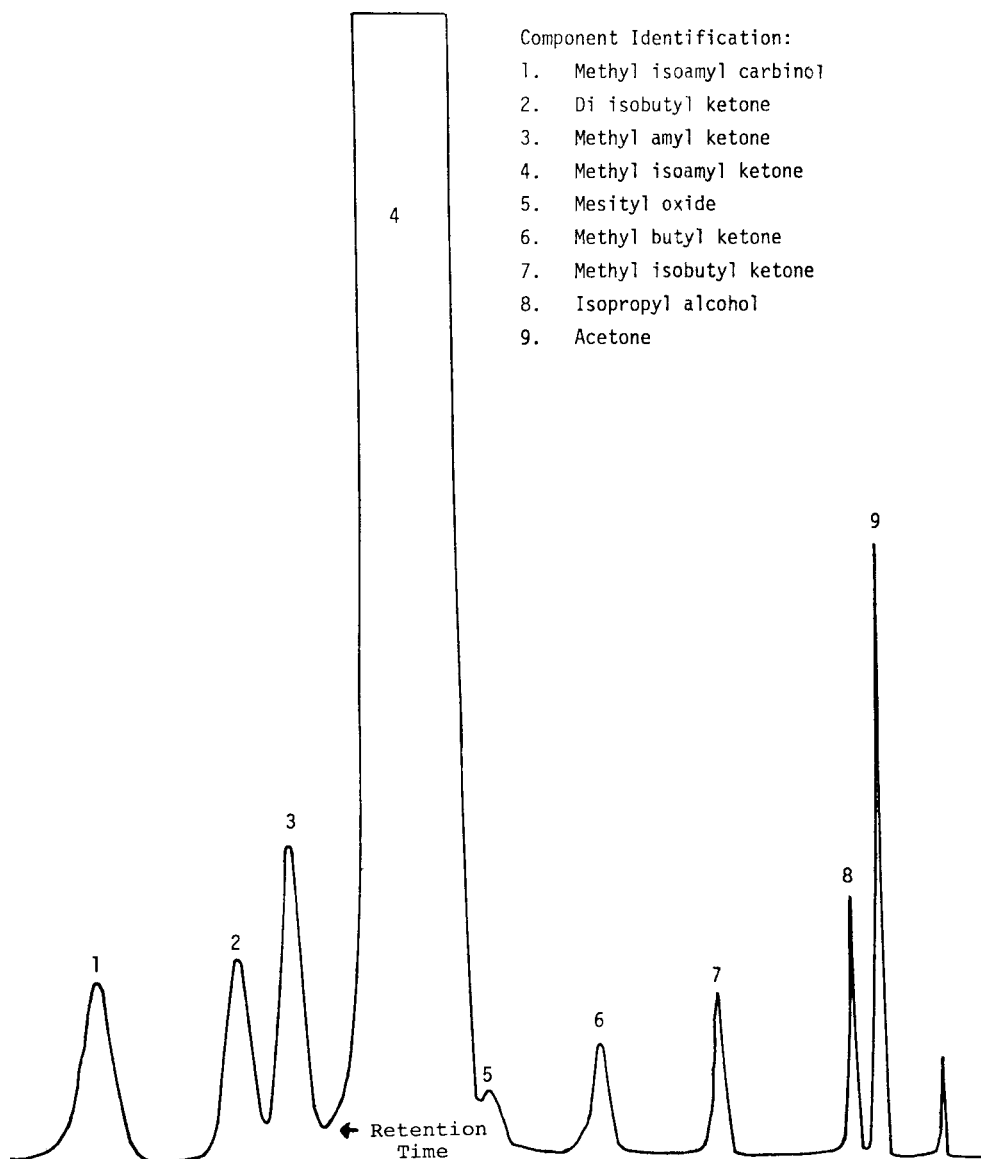


FIG. 2 Typical Chromatogram of Methyl Isoamyl Ketone

TABLE 2 Average Compositions of Samples Used in Precision Determination

	Methyl Isoamyl Ketone (MIAK)	Methyl Amyl Ketone (MAK)
Total ketones	99.66	99.76
MIAK	99.0	...
MAK	...	99.11
Isopropyl alcohol (IPA)	0.06	0.06
Mesityl oxide (MO)	0.12	...
Methyl isoamyl carbinol (MIAC)	0.11	...
Methyl isobutyl carbinol (MIBC)	...	0.04

TABLE 3 Standard Deviation

	Within Laboratory	Between Laboratories
Methyl Isoamyl Ketone:		
Total ketones	0.047 (10) ⁴	0.160 (4)
MIAK	0.047 (8)	0.250 (3)
IPA	0.004 (8)	0.012 (3)
MO	0.010 (6)	0.010 (2)
MIAC	0.010 (6)	0.020 (3)
Methyl Amyl Ketone:		
Total ketones	0.015 (10) ⁴	0.158 (4)
MAK	0.070 (8)	0.190 (3)
IPA	0.007 (8)	0.010 (3)
MIBC	0.003 (6)	0.013 (2)

⁴ Degrees of freedom are shown in parentheses.

because there is no available material having an accepted reference value.

13. Keywords

13.1 gas chromatography; methyl amyl ketone (MAK); methyl isoamyl ketone (MIAK); purity; solvents

TABLE 4 Precision

	Repeatability, % absolute	Reproducibility, % absolute
Methyl Isoamyl Ketone:		
Total ketones	0.15	0.62
MIAK	0.15	1.07
IPA	0.014	0.05
MO	0.04	0.05
MIAC	0.04	0.11
Methyl Amyl Ketone:		
Total ketones	0.05	0.61
MAK	0.24	0.84
IPA	0.02	0.05
MIBC	0.01	0.07

SUMMARY OF CHANGES

Committee D-1 has identified the location of selected changes to this standard since the last date of issue that may impact the use of this standard.

(I) All references to specific brands or manufacturers have been deleted. All materials are described in terms that will allow easy location. Refer to RR:D01–1043 for useful information.

The American Society for Testing and Materials takes no position respecting the validity of any patent rights asserted in connection with any item mentioned in this standard. Users of this standard are expressly advised that determination of the validity of any such patent rights, and the risk of infringement of such rights, are entirely their own responsibility.

This standard is subject to revision at any time by the responsible technical committee and must be reviewed every five years and if not revised, either reapproved or withdrawn. Your comments are invited either for revision of this standard or for additional standards and should be addressed to ASTM Headquarters. Your comments will receive careful consideration at a meeting of the responsible technical committee, which you may attend. If you feel that your comments have not received a fair hearing you should make your views known to the ASTM Committee on Standards, at the address shown below.

This standard is copyrighted by ASTM, 100 Barr Harbor Drive, PO Box C700, West Conshohocken, PA 19428-2959, United States. Individual reprints (single or multiple copies) of this standard may be obtained by contacting ASTM at the above address or at 610-832-9585 (phone), 610-832-9555 (fax), or service@astm.org (e-mail); or through the ASTM website (www.astm.org).